

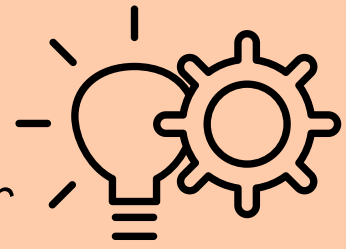
REASONS WHY



SERVER HOSTING IS SO EXPENSIVE

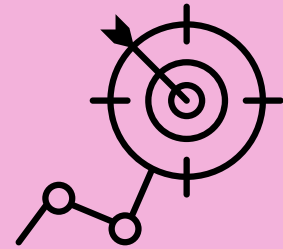
1. HARDWARE SPECS

- Powerful CPUs and ample RAM are crucial for smooth gameplay.
- Higher specs mean higher costs due to increased hardware requirements.



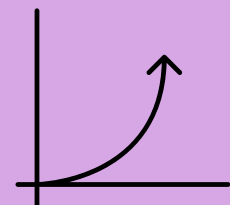
2. PLAYER CAPACITY

- More players require more resources, leading to higher costs.
- Hosting larger player counts demands additional server resources, driving up expenses.



3. LOCATION AND BANDWIDTH

- Server location affects latency and gaming experience.
- Bandwidth needs impact data transfer rates and overall performance, influencing costs.



6. ADDITIONAL FEATURES

- Management tools, backups, and mod support add convenience but come at extra cost.
- Advanced features enhance gameplay but require more resources, increasing expenses.

